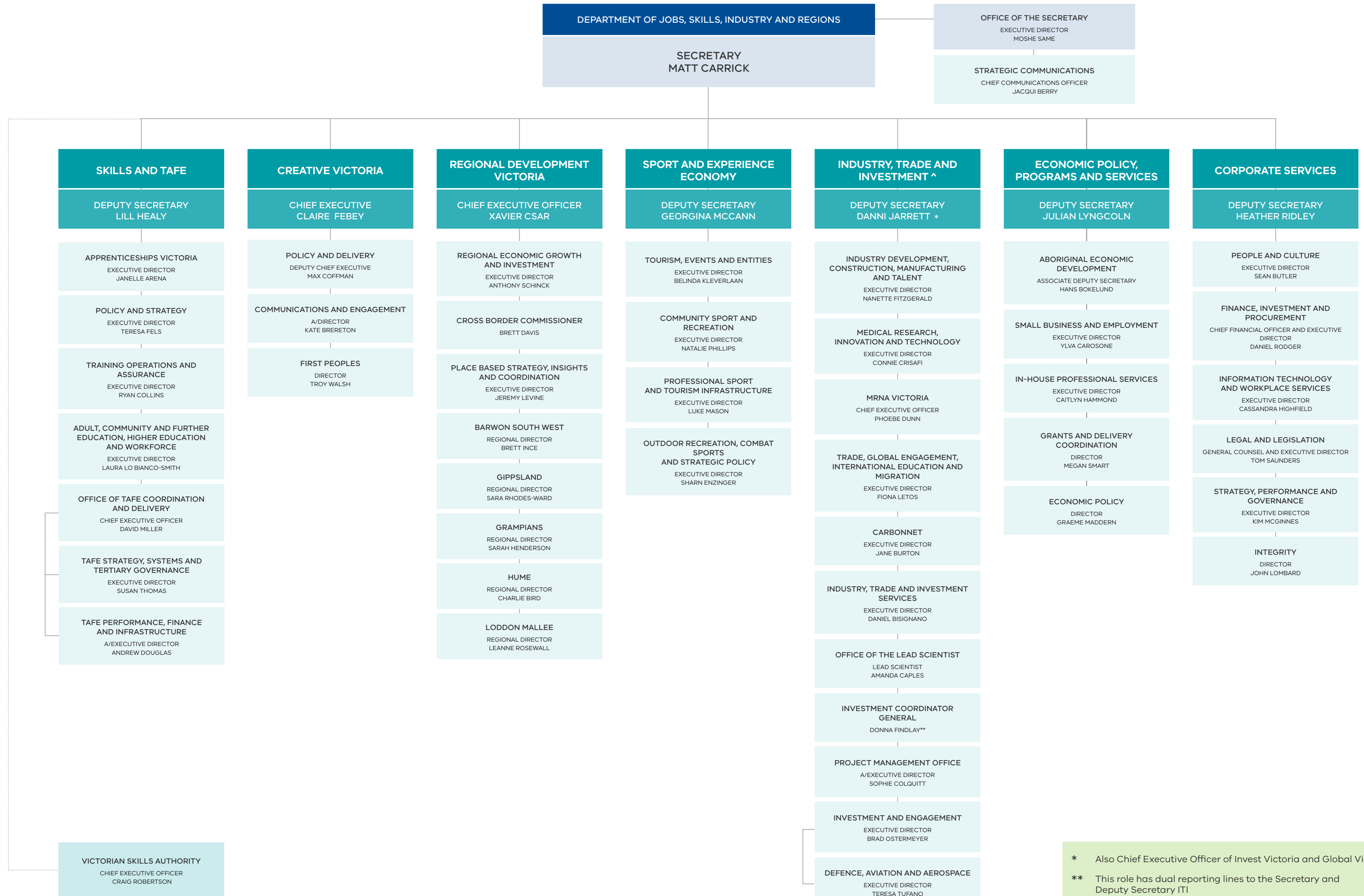


# DEPARTMENT OF JOBS, SKILLS, INDUSTRY AND REGIONS – ORGANISATIONAL CHART

AS AT MAY 2026



\* Also Chief Executive Officer of Invest Victoria and Global Victoria

\*\* This role has dual reporting lines to the Secretary and Deputy Secretary ITI

^ 7 Commissioners for Victoria report to this group. Visit [global.vic.gov.au](http://global.vic.gov.au) for further details.