

OFFICIAL



# Steel Supply Chain Directory

November 2023



[vic.gov.au/MadeInVictoria](https://vic.gov.au/MadeInVictoria)

## Introduction

This supply chain directory showcases the capabilities of Victoria's globally competitive steel industry. It lists businesses that have a significant presence in Victoria and manufacture their goods locally. It aims to facilitate the increased use of Victorian made steel products to help to grow the state's already strong steel manufacturing capability and capacity and further stimulate Victoria's economy. We encourage businesses and other organisations to utilise this resource to identify partners for current and future projects.

Home to a large and diverse steel sector, Victoria has the capacity and capability to meet the steel needs of the wide array of major projects underway across the state. The Victorian steel sector has a wide range of strengths including heavy assemblies and installations, CNC and robotic forming, plate and section rolling and welding. By sourcing over 80% of their steel locally, Victorian steel fabricators can deliver unmatched reliability and quality.

If you would like your business profile to be featured in the next edition of this supply chain directory, please contact: [advanced.manufacturing@ecodev.vic.gov.au](mailto:advanced.manufacturing@ecodev.vic.gov.au).

## Disclaimer

This publication has been prepared by the Department of Jobs, Skills, Industry and Regions (DJSIR) for general information only. It contains content provided by businesses that have volunteered to be included in this publication, including capabilities, profiles, capacity, certifications and contact details of, and industries supplied to by, those businesses. This publication is not an endorsement of any business, information, data, advertisement, claim, products and/or services included in it.

DJSIR and the State of Victoria provide no warranty or guarantee and make no representation that the information contained in this publication is current, accurate, complete, without flaw of any kind or is suitable for your particular purposes. You must not rely on this publication for any general or specific purpose, including as a statement of government policy (except where clearly stated). You are responsible for assessing whether the information contained in this publication is accurate, complete or suitable and you should undertake your own due diligence and seek your own independent advice.

Links to other websites in this publication are provided for convenience only. DJSIR and the State of Victoria make no claim and take no responsibility for the suitability, completeness, accuracy or authenticity of the information contained in any linked websites. Persons accessing linked websites should assess the relevance and accuracy of any information contained on the linked websites and whether it is suitable for their use. Links to other websites is not an endorsement of any business, information, data, advice, advertisement, offer, claim, products and/or services included on those websites.

To the extent permitted by law, DJSIR and the State of Victoria disclaim liability for any error, loss, damages, costs or other consequence caused by the use or reliance on information contained in this publication. DJSIR and the State of Victoria reserve the right to amend or withdraw this publication as required and without notice.

## Local Jobs First

Local Jobs First supports Victorian businesses and workers by ensuring that small and medium size enterprises are given a full and fair opportunity to compete for both large and small government contracts helping to create opportunities including for apprentices, trainees and cadets.

Find out more about Local Jobs First here: [www.localjobsfirst.vic.gov.au](http://www.localjobsfirst.vic.gov.au)

### Standard Projects

All Victorian Government projects with a value of \$1 million or more in regional Victoria or \$3 million or more in metropolitan Melbourne or for state wide activities must apply Local Jobs First.

### Strategic Projects

With all projects valued at \$50 million or above automatically classified as Strategic Projects, as well as other projects agreed by government, more opportunities are now available to local industry and workers to contribute to high value goods, services and construction projects.

There are specific opportunities for local steel businesses. Explore the full listing of Strategic Projects here:

[www.localjobsfirst.vic.gov.au/projects/strategic-projects](http://www.localjobsfirst.vic.gov.au/projects/strategic-projects)



## Directory Listings

Page		Page		Page	
<b>8</b>	3PE Engineering	<b>20</b>	Coil Steels	<b>32</b>	Orrcon Steel
<b>9</b>	Apex Welding & Steel Fabrication	<b>21</b>	Continental Steel	<b>33</b>	PacifiCO Structural Steel
<b>10</b>	ArcStructural	<b>22</b>	Coslee Heavy Metal Fabricators	<b>34</b>	Page Steel Fabrications
<b>11</b>	Aus Iron Industries	<b>23</b>	CPE Construction	<b>35</b>	R&M Engineering
<b>12</b>	Australian Pipe and Tube	<b>24</b>	Doogood Powdercoating	<b>36</b>	Shearform
<b>13</b>	Australian Rollforming Manufacturers	<b>25</b>	GAM Steel	<b>37</b>	Skrobar Engineering
<b>14</b>	AW Bell	<b>26</b>	Genis Steel	<b>38</b>	Steelwork Bendigo
<b>15</b>	Barra Steel	<b>27</b>	GVP Fabricators	<b>39</b>	Stilcon Holdings
<b>16</b>	BlueScope	<b>28</b>	Infrabuild	<b>40</b>	Structural Challenge
<b>17</b>	Bridgecon Engineering	<b>29</b>	Keppel Prince Engineering	<b>41</b>	Sutcliffe Engineering
<b>18</b>	Calibah Industries	<b>30</b>	Major Furnace Australia	<b>42</b>	Vulcan
<b>19</b>	Calibre Steel	<b>31</b>	New Touch Industries	<b>43</b>	Webforge Locker

## Capability Matrix

Business	Page no.	Assembles & Installations	Forming/ Cutting/ Bending	Galvanizing	Heat Treating & Tempering	Milling	Painting	Plate Rolling	Polishing	Section Rolling	Shot * Media Blasting	Transport & Delivery	Welding	Supply & Distribution	Other
3PE Engineering	8	•	•	•		•	•	•	•	•	•	•	•	•	
Apex Welding & Steel Fabrication	9	•	•	•		•	•	•		•	•	•	•		•
ArcStructural	10	•	•				•				•	•	•		•
Aus Iron Industries	11	•										•	•		
Australian Pipe and Tube	12									•					
Australian Rollforming Manufacturers	13		•							•		•		•	
AW Bell	14	•			•	•	•						•		
Barra Steel	15	•	•	•	•		•	•		•	•	•	•		
BlueScope	16			•	•	•	•	•				•	•	•	
Bridgecon Engineering	17	•					•				•	•	•	•	
Calbah Industries	18		•				•	•			•	•	•		•
Calibre Steel	19											•		•	
Coil Steels	20														•

Continental Steel	21	•	•				•	•			•	•	•	•	
Coslee Heavy Metal Fabricators	22	•					•					•	•		
CPE Construction	23	•	•				•				•	•	•	•	
Doogood Australia	24		•	•	•		•		•		•	•	•	•	•
GAM Steel	25														•
Genis Steel	26	•	•				•				•	•	•	•	•
GVP Fabricators	27	•	•				•			•		•	•		
Infrabuild	28		•			•				•		•		•	•
Keppel Prince Engineering	29	•	•			•	•	•			•		•		•
Major Furnace Australia	30	•	•			•	•	•		•			•		
New Touch Industries	31	•	•									•	•		
Orrcon Steel	32											•		•	•
PacifiCO Structural Steel	33	•	•		•	•	•				•	•	•		•
Page Steel Fabrications	34	•	•				•				•	•	•		
R & M Engineering	35	•	•	•		•	•	•		•	•	•	•	•	•

Shearform	36	•	•			•	•	•		•		•	•	•	
Skrobar Engineering	37	•	•				•					•	•		
Steelwork Bendigo	38	•	•				•				•	•	•		
Stilcon Holdings	39	•					•					•	•		
Structural Challenge	40	•	•				•					•	•	•	
Sutcliffe Engineering	41												•		
Vulcan	42		•					•				•		•	
Webforge Locker	43														•



## 3PE Engineering

[www.3pe.com.au](http://www.3pe.com.au)

Frans Baas

[frans@3pe.com.au](mailto:frans@3pe.com.au)

03 9042 6855

218 Whithall Street

Yarraville, VIC 3013

### About

Capabilities include fabrication of steel structures, design and engineering.

### Capacity

\$500,000



### Inhouse Capabilities

Assemblies and Installations

Forming / Cutting / Bending

Galvanizing

Milling

Painting

Plate Rolling

Polishing

Section Rolling

Shot and Media Blasting

Transport and Delivery

Welding

Supply and Distribution

### Industries Supplied

Building Construction

Defence

Infrastructure

Mining

Refinery

### Certifications

AS/NZS 5131



# Apex Welding & Steel Fabrication

[www.apexwelding.com.au](http://www.apexwelding.com.au)

Anthony Galgano

[anthony@apexwelding.com.au](mailto:anthony@apexwelding.com.au)

0439 844 312

85 - 89 Metrolink Circuit

Campbellfield, VIC 3061

## About

Apex Welding & Steel Fabrication has been working in the Australian steel industry for over 40 years. We operate in a 4,300 sqm facility providing the full range of services including in house steel detailing/3D modelling, in-line sand blasting, CNC processing, fabrication, painting, delivery and installation. Our detailing, fabrication and management teams can deliver complex structural and architectural steel projects from initiation to completion. We also have the ability to respond quickly to project changes since we have direct control over the full complement of in-house services we provide.



## Capacity

Capacity to deliver project with a project value of up to \$10 million.

## Inhouse Capabilities

Assemblies and Installations

Forming / Cutting / Bending

Galvanizing

Milling

Painting

Plate Rolling

Section Rolling

Shot and Media Blasting

Transport and Delivery

Welding

CNC Beamline

Steel Detailing

## Industries Supplied

Building Construction

## Certifications

Australian Standards



# ArcStructural

<https://www.arcstructural.com.au/>

Andrew Moir

andrew@arcstructural.com.au

0402 739 427

313a Dohertys Road

Truganina, VIC 3029



## About

ArcStructural are a skilled team of project managers, steel fabricators, welders and riggers servicing top tier builders across Melbourne. Supported by a competent, collaborative and experienced management team, ArcStructural engage with clients early in the life of the project to assist with design development and value management options. Manufacturing steel within 20 minutes of the Melbourne CBD, ArcStructural are capable of turning over complex jobs in a short time frame, without any compromise to quality. The factory and office are set on a 4-acre site with 600m<sup>2</sup> under roof. Complete with 7 overhead cranes, a Daito coping robot and OMSG shot-blasting machine, fabrication is efficient and accurate. On-site crews of riggers and boilermakers install all fabricated steel safely and as per the documented set-out and levels. Cranes and access equipment can all be provided as required to facilitate jobs of any size and with difficult access requirements.

## Capacity

Max capacity per annum is 10,000 tonnes.

## Inhouse Capabilities

Assemblies and Installations

Forming / Cutting / Bending

Painting

Shot and Media Blasting

Transport and Delivery

Welding

Fabrication

## Industries Supplied

Building Construction

Infrastructure

Refinery

Transport

Multi level commercial

Industrial plants

Industrial buildings

General steel and metal fabrication

Car parks

Public infrastructure

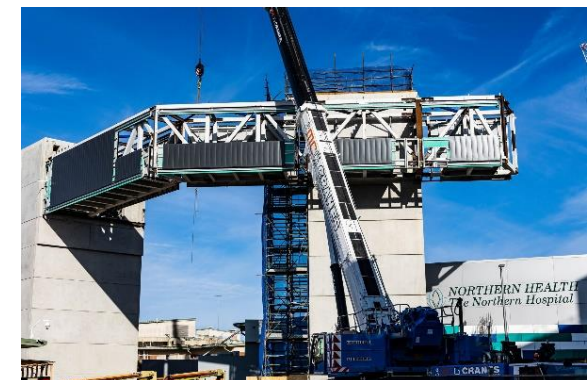
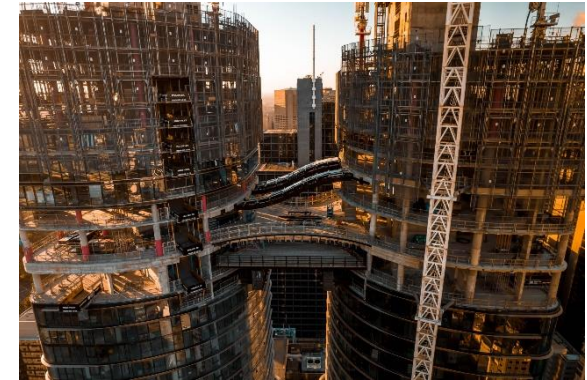
## Certifications

ISO 9001

ISO 14001

ASI Environmental Sustainability Charter

Structural Steelwork Certification CC2 (Pending)





# Aus Iron Industries

[www.ausironindustries.com.au](http://www.ausironindustries.com.au)

Matt Meinhardt

[ausiron@ausironindustries.com.au](mailto:ausiron@ausironindustries.com.au)

03 9799 9922

15-19 Galli Court

Dandenong South, VIC 3175

## About

Established in 1999 Aus Iron Industries has extensive experience in the supply, fabrication and installation of structural steel for a broad range of major construction projects.

Located in Dandenong South the fabrication facility is approximately 8,000 square metres under cover with over 25 welding stations. There is capability to lift modules/beams up to 50 tonne mass and in excess of 10m wide x 6m high. With inhouse site installation capability and a highly experienced and dedicated management team, all capable of executing complex projects from design to completion.



## Capacity

Capacity to deliver projects ranging in value from \$5-\$15 million.

## Inhouse Capabilities

Welding

Assemblies and Installations

Transport and Delivery

## Industries Supplied

Aerospace/Aviation

Building Construction

Defence

Wind and Solar

Infrastructure

Mining

## Certifications

ISO 9001 2016

ISO 4801 2001

ISO 14001 2016

ASI Environmental Sustainability Charter



# Australian Pipe and Tube

<https://auspipetube.com/>

John Egan

john.egan@auspipetube.com

03 8361 8366

2 Independent Way

Ravenhall, VIC 3023

## About

Australian Pipe & Tube is a privately owned, Australian company, specialising in the manufacture of the highest quality (to Australian Standards) tubular steel products. APT's state-of-the-art tube mill in Victoria specialises in manufacturing RHS, CHS & SHS tubular steel products.



## Capacity

In excess of 60,000 tonnes per annum.

## Inhouse Capabilities

Section Rolling

## Industries Supplied

Building Construction

Defence

Infrastructure

Mining

Maritime

Transport

## Certifications

AZ/NZS 1163:2016

ACRS Accredited



# Australian Rollforming Manufacturers

<https://ausrollform.com.au/>

Robert Rizzo

rrizzo@ausrollform.com.au

0427 121 337

46A Brooks Drive

Dandenong South, VIC 3175

## About

Established in the 1940s, Australian Rollforming Manufacturers (ARM) provide world-class rollformed products, design expertise and dedicated project management services to a wide range of national and international engineering projects. As Australia's metal rollforming specialists, we are driven by finding solutions to complex problems. We pride ourselves on our superior capabilities, highly skilled team and excellent service.

At ARM, we specialise in rollforming, shaping, drilling, punching and cutting metal with precision accuracy, down to the millimetre. Combined with our decades of in-house knowledge, we offer our customers precision accuracy on rollforming solutions in thicknesses up to 10mm in any length or shape required. From stainless steel, aluminium, copper, mild steel and all types of coated coil, ARM delivers superior results.

We are proud to be able to push the boundaries when it comes to metal rollforming. We specialise in designing and rollforming custom and standard profiles. We follow all Australian and major international standards, so you can be confident that we produce the highest quality of products, including the extensive DuraGal® range.

You name it, we can roll it.

## Capacity

In excess of 60,000 tonnes per annum.

## Inhouse Capabilities

Forming / Cutting / Bending

Section Rolling

Transport and Delivery

Supply and Distribution

## Industries Supplied

Automotive

Building Construction

Defence

Energy – Battery Infrastructure

Wind and Solar

Infrastructure

Mining

Maritime

Refinery

Transport

## Certifications

ISO 9001 Quality Management System



australian  
**rollforming**™



# AW Bell

[www.awbell.com.au](http://www.awbell.com.au)

Sam Sener

sams@awbell.com.au

03 9799 9555

145 Abbotts Road

Dandenong South VIC 3175



## About

AW Bell is a globally recognised supplier of complex metal parts for the aerospace, defence, space and biomedical industries. At its core, AW Bell is a foundry specialising in investment casting and sand casting, both ferrous and non-ferrous. However our capabilities extend to include prototyping, engineering and design for manufacture support, tooling, metallurgical services, precision machining, NDT testing, painting, finishing and assembly. This high level of vertical integration drives up efficiencies, enabling us to offer reduced lead times and cost savings to our customers.

We are driven by innovation. The development of our unique ABE process enabled us to become a key supplier to the global F-35 Fighter program and significantly expand our exports into aerospace and defence. Through this growth we have constantly reinvested in capabilities, including additional 5 axis machining centres, foundry automation technology, NADCAP certification in aerospace welding and digital radiography fluorescent penetrant testing and most recently the implementation of titanium vacuum melting capability, making us the first titanium investment casting foundry in Australia.

## Capacity

Capacity to deliver projects of a value of up to \$20 million.

## Inhouse Capabilities

Assemblies and Installations

Heat Treating and Tempering

Milling

Painting

Welding

## Industries Supplied

Aerospace/Aviation

Automotive

Defence

Wind and Solar

Infrastructure

Mining

Maritime

Refinery

Transport

## Certifications

AS9100

ISO14001



# Barra Steel VIC

[www.barrasteel.com](http://www.barrasteel.com)

Ben Jones

[ben@barrasteel.com.au](mailto:ben@barrasteel.com.au)

03 9768 2477

2/28 Commercial Drive

Dandenong South, VIC 3175

## About

Barra Steel established in 1995 is a steel fabricator focusing on medium to large commercial projects and specialist residential projects. Comprising of 58 personal and a leadership team. The company continues to expand together with new technology and dedicated staff is constantly planning ahead and producing solutions for our customers.



## Capacity

8,000 tonnes per annum

## Inhouse Capabilities

Assemblies and Installations  
Forming / Cutting / Bending  
Galvanising  
Heat Treating and Tempering  
Painting  
Plate Rolling  
Section Rolling  
Shot and Media Blasting  
Transport and Delivery  
Welding  
Supply and Distribution

## Industries Supplied

Aerospace/Aviation  
Building Construction  
Defence  
Energy – Battery Infrastructure  
Wind and Solar  
Infrastructure  
Mining  
Maritime  
Refinery  
Transport

## Certifications

ISO 9001 Quality

Environmental Sustainability Charter

JAS- ANZ

Steel Compliance Australia – CC3





# BlueScope

[www.bluescopesteel.com.au](http://www.bluescopesteel.com.au)

BlueScope

steeldirect@bluescopesteel.com

1800 800 789

BlueScope Steel Westernport Factory

Bayview Road

Hastings, VIC, 3915

## About

BlueScope is a provider of innovative steel materials, products, systems, and technologies, headquartered in Australia with operations spread across North America, Australia, New Zealand, Pacific Islands and throughout Asia. We are one of the world's leading manufacturers of painted and coated steel products, and with our strong expertise in steel we provide vital components for houses, buildings, structures, automotive and more. Our global networks are another great strength at BlueScope. With more than 160 operations and sales offices across 16 countries, we employ over 15,000 people and serve thousands of customers every day. Our strong partnerships and networks in Victoria are built on BlueScope's most loved and recognised product brands, such as COLORBOND®, TRUECORE®, ZINCALUME®, XLERPLATE® and REDCOR® steels.



## Capacity

Capacity to supply projects valued from \$0m - \$100m+.

## Inhouse Capabilities

Galvanizing

Heat Treating and Tempering

Milling

Painting

Plate Rolling

Transport and Delivery

Welding

Supply and Distribution

## Industries Supplied

Building Construction

Defence

Energy-Hydrogen

Energy-Hydroelectricity

Energy-Battery

Infrastructure

Wind and Solar

Infrastructure

Mining

Maritime

Refinery

Transport

## Certifications

ISO 9001, 14001

### Australian Standards

AS 1365 (Tolerance), AS/NZS 1594, 3678, 3679.1, 3679.2, 1548 (Hot Rolled), AS/NZS 1595 (Cold Rolled) AS 1397-2011 (Metal Coated), AS/NZS 2728:2013 (Pre-painted)

### ACRS certifications

AS/NZS 1594:2002 131104 for TruSpec®, AS/NZS 3678:2016 120802 for Xlerplate® and Redcor® plate, AS/NZS 3679-1:2016 160403 for Embar®, AS/NZS 3679-2:2016 160402 for Welded Beams & Columns Unanderra

### ATIC Scheme 10 certification (Global Mark)

AS/NZS 3678 for Structural steel – Hot-rolled plates, floorplates, slabs and AS/NZS 3679-2 for Structural Steel – Welded I Sections

Responsible Steel site certification



# Bridgecon Engineering

[www.bridgecon.com.au](http://www.bridgecon.com.au)

Kieran O Flynn

kieran@bridgecon.net.au

0401 511 641

22-24 Brooklyn Court

Campbellfield, VIC 3061

## About

Bridgecon specialize in providing steel fabrication services to the civil Infrastructure industry, the company was initially set up to provide assistance to its sister company Bridgecon Pty Ltd who specializes in the construction of Bridges and civil infrastructure projects , Bridgecon Engineering has strived in our ability to provide complete structural and engineering services to the Civil Infrastructure sector.



## Capacity

\$5 million - \$15 million per annum

## Inhouse Capabilities

Assemblies and Installations

Painting

Shot and Media Blasting

Transport and Delivery

Welding

Supply and Distribution

## Industries Supplied

Building Construction

Defence

Infrastructure

Maritime

## Certifications

ISO 45001: 2018

ISO 9001: 2015

ISO 14001: 2015

Member of CCF Victoria

Member of Australian Steel Institute



# Calbah Industries

[www.calbah.com](http://www.calbah.com)

Vic Nikolsky

[vnikolsky@calbah.com](mailto:vnikolsky@calbah.com)

0425 089 555

17-29 Arkwright Drive

Dandenong South, VIC 3175



## Inhouse Capabilities

Forming / Cutting / Bending

Painting

Plate Rolling

Shot and Media Blasting

Transport and Delivery

Welding

Inhouse Processing of Steel

## Industries Supplied

Aerospace/Aviation

Defence

Energy – Hydroelectricity

Wind and Solar

Infrastructure

Mining

Maritime

Refinery

## Certifications

ISO 9001 QUALITY

ISO 14001 ENVIRONMENT

ISO 45001 HEALTH & SAFETY

ASI ENVIRONMENTAL SUSTAINABILITY  
CHARTER - PLATINUM LEVEL

DNV 2.7-1 Oil & Gas Offshore

AS/NZS 1554.1 Steel Fabrication

AS/NZS 1554.2 Stud Welding

AS/NZS 1554.6 Stainless Steel Fabrication

AS/NZS 1665 Aluminium Fabrication

## About

Calbah Industries is Australia's leading design, engineering and specialist steel fabrication company. We are based in Dandenong South, Melbourne, with our own purpose built, state of the art manufacturing facility, Calbah has a can do attitude is trusted by business and Government across the region to deliver innovative engineering products that operate effectively every time, even in the harshest conditions.

Our skilled engineers can handle any challenge and have designed everything from tunnel boring equipment, cement silos, Steel Bridge Beams, Helicopter Winch Training Modules, remote pipe cutters and underground refuge chambers to hydraulic, pneumatic and electrical systems. Calbah has even designed and manufactured stainless steel industrial sculptures.

## Capacity

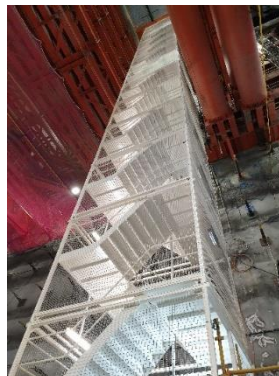
High Capacity for Processing and welding Steel

40t O/H Crane Lift Capacity

10m under Hook

Up to 50m long – Bridge Beams

Projects up to \$10 million to \$15 million.





# Calibre Steel

[www.calibresteel.com.au](http://www.calibresteel.com.au)

Alex Salins

[melbournesales@calibresteel.com.au](mailto:melbournesales@calibresteel.com.au)

03 7301 7301

14 Gordon Luck Avenue

Altona North, VIC 3025

## About

Calibre Steel provides customers expertise in steel plate supply. With an experienced and dedicated team, we focus on supplying high-quality steel plate products and value add services to deliver projects Australia-wide. Excellence in customer service, stockholdings, product handling, quality assurance, traceability and safe product delivery are all part of our offering. Our range includes structural steel plate, laser plate and quench and tempered plate products complemented by steel plate processing services. As part of the United Steel group, we can also supply structural steels, pipe and tube, merchant bar products to suit.



## Capacity

Able to supply projects up to 1,800 tonnes.

## Inhouse Capabilities

Transport and Delivery

Supply and Distribution

## Industries Supplied

Building Construction

Defence

Wind and Solar

Infrastructure

Mining

Transport

## Certifications

Australian Standards



## Coil Steels

[coilsteels.com.au](http://coilsteels.com.au)

Dean Manicolo

[vicsales@coilsteels.com.au](mailto:vicsales@coilsteels.com.au)

03 9542 4300

32 Howleys Road

Notting Hill, VIC 3168

### About

Coil Steels is a leading, independent steel sheet and coil distribution business. We prioritise our customers and strive to provide them with a wide range of sheet and coil products and value-added services to match. To further enhance our steel service, we invest in our stockholdings and advanced steel processing capabilities, ensuring our customers can order the steel sheet and coil products required for their projects.



### Inhouse Capabilities

Steel sheet and coil distribution services

Slitting

Shearing

Recoiling

### Industries Supplied

Agriculture

Automotive

Defence

Infrastructure

Wind and Solar

Mining

Transport

Manufacturing

Residential Building

Commercial Building and Construction

### Certifications

ISO9001



# Continental Steel

[www.continentalsteel.com.au](http://www.continentalsteel.com.au)

Daniel Mondoc

[office@continentalsteel.com.au](mailto:office@continentalsteel.com.au)

0420 509 708

14 Whitfield Boulevard

Cranbourne West, VIC 3977

## About

Continental Steel Pty Ltd is a structural steel fabricator, specialising in steel construction and metallic structural works industry. The company operates from the south eastern suburbs of Melbourne, from modern manufacturing premises.

The main capabilities are early sub-contract involvement, estimating, design, engineering, and detailing, project management, steel processing, steel procurement and fabrication, and installation.



## Capacity

100 tonnes – 3,000 tonnes

## Inhouse Capabilities

Assemblies and Installations

Forming / Cutting / Bending

Painting

Plate Rolling

Shot and Media Blasting

Transport and Delivery

Welding

Supply and Distribution

## Industries Supplied

Building Construction

Defence

Infrastructure

Mining

## Certifications

Operating in accordance with the ISO9001 standards

Operating & comply with AS/NZS 5131 (2016) Structural Steel Work Fabrication & Erection.



# Coslee Heavy Metal Fabricators

[www.coslee.com.au](http://www.coslee.com.au)

Richard Cosentini

[sales@coslee.com.au](mailto:sales@coslee.com.au)

03 9357 2311

17-19 Industrial Avenue

Thomastown, VIC 3074



## Capacity

1,000 – 2,000 tonnes per annum

## Inhouse Capabilities

Assemblies and installations

Painting

Transport and Delivery

Welding

## Industries Supplied

Building Construction

Infrastructure

Mining

Transport

## Certifications

Weld Australia, IIW – AS/NZS ISO 3834.2,

Steelwork Compliance Australia – AS/NZS 5131 CC3

## About

Coslee Heavy Metal Fabricators commenced operations in October 1998. Today, Coslee Heavy Metal Fabricators is one of Melbourne's leading fabricators, taking on jobs of all sizes, fabricating small brackets to huge projects of multiple components. Coslee Heavy Metal Fabricators has extensive experience in fabricating structural steel (specialising in road infrastructure projects, cranes, specialised lifting equipment, and poles) made from carbon and stainless steel. Coslee Heavy Metal Fabricators is conveniently located beside the Metropolitan Ring Road in Thomastown, on a 20000 square meter site comprising of 4 fabrication workshops with a huge storage yard. Each factory comprises of overhead cranes, including an outdoor crane facility purpose built for the loading and unloading of open top shipping containers. The storage yard is serviced with forklifts and a mobile yard crane. Current workshop capacity allows for a 50m beam weighing up to 40ton to be fabricated, painted, and delivered in one piece. With our own trucks all with mounted cranes, Coslee Heavy Metal Fabricators offers delivery and site installation services of traffic lights and light poles. The fabrication workshops have welding equipment for the SAW, MMAW, MIG and FCAW processes, combined with shop prime painting facilities, electricians and maintenance fitters many projects can be supplied as a turnkey product. Coslee Heavy Metal Fabricators works closely with subcontractors and clients and can coordinate specification paint finishes, non-destructive testing, 3rd party inspections, preassembly and electrical fit out, and 24/7 oversize deliveries. Coslee Heavy Metal Fabricators has a quality management system based upon the requirements of AS/NZS ISO 9001 and hold 3rd party accreditations to AS/NZS 5131 CC3 and AS/NZS ISO 3834.2. An in-house quality management team provides QA checks, reports and documentation as required by the client's specification and has capacity to provide full traceability for projects if required. All welding is supervised by our in-house welding supervisors, Coslee Heavy Metal Fabricators holds an extensive library of welding procedures covering most welding processes, positions, and joint configurations encountered, this combined with already qualified welders (to ISO 9606-1) provides a speedy start to most projects.





# CPE Construction

[cpeconstruction.com.au](http://cpeconstruction.com.au)

Damien Guthrie

[guthrie@cpeconstruction.com.au](mailto:guthrie@cpeconstruction.com.au)

03 5872 2156

3718 Murray Valley Highway

Cobram, VIC 3644

## About

CPE Construction has been established in Cobram Victoria for over 30 years and specialises in structural engineering, roofing, cladding and construction management.

We want to do great work, on great projects, with and for great people.

CPE Construction have the capability and resources to comfortably and reliably deliver projects from \$0-\$10 million to a high quality of both workmanship and customer service.



## Capacity

\$50,000- \$15,000,000

## Inhouse Capabilities

Assemblies and installations

Forming / Cutting / Bending

Painting

Shot and Media Blasting

Transport and Delivery

Welding

Supply and Distribution

## Industries Supplied

Building Construction

Defence

Infrastructure

Refinery

Transport

## Certifications

ASI Environmental Sustainability  
Charter

ISO9001:2015

ISO45001:2018

ISO4001:2015





# Doogood Australia

[www.doogoodaustralia.com.au](http://www.doogoodaustralia.com.au)

Trisha Riddell

[sales@doogoodaustralia.com.au](mailto:sales@doogoodaustralia.com.au)

1300 123 342

Factory 5, 28-30 Green Street

Doveton, VIC 3177



## About

Doogood™ Australia provides end-to-end steel fencing solutions for residential, commercial, and civil sectors. Our family-owned and operated business supplies a comprehensive range of the highest quality steel fencing products, powder coated to your specifications and backed by exceptional customer service. Enjoy a single point of contact with one company responsible for manufacturing, supply, and powder coating. Simple. Efficient. Effective.

## Capacity

Capacity to deliver projects ranging in value from \$5 - \$10 million.

Capacity of 14,000 tonnes per annum

Higher projects can be delivered in collaboration with industry partners.

DOOGOOD AUSTRALIA currently employs 75 people operating split shifts to maintain production.

We offer a comprehensive range of fencing wire solutions for civil, commercial, industrial, and rural wire fencing needs. We specialise in producing custom-made fencing, gates, welding, and bollards.

## Inhouse Capabilities

Forming / Cutting / Bending

Galvanizing

Heat Treating and Tempering

Painting

Polishing

Shot and Media Blasting

Transport and Delivery

Welding

Supply and Distribution

Plasma Cutting & Roll Forming

## Industries Supplied

Aerospace/Aviation

Automotive

Building Construction

Defence

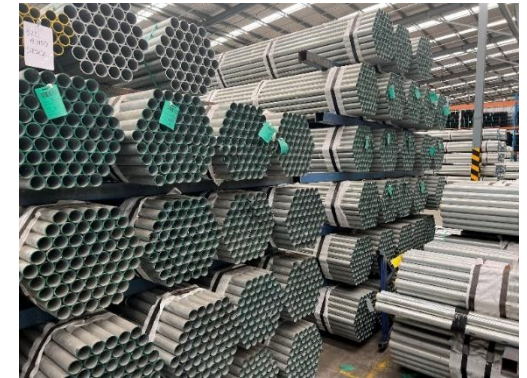
Wind and Solar

Infrastructure

Mining

Refinery Transport

Fencing



# GAM Steel

[gamsteel.com.au](http://gamsteel.com.au)

Michael Iaconis

[sales@gamsteel.com.au](mailto:sales@gamsteel.com.au)

03 8368 1555

14 Gordon Luck Avenue

Altona North, VIC 3025

## About

GAM Steel is a leader in structural steel distribution and processing services. Our site is located in Altona North, and incorporates 60,000m2 of facility space. We invest in stockholdings and state of the art processing services, to deliver on projects Australia-wide. Our range includes structural steel, merchant bar, pipe and tube and building products, complemented by in-house processing including beamline services, bandsaws and beam cambering. With our own delivery fleet, GAM Steel delivers first class customer service in steel. We are proudly part of the United Steel group, and can also supply projects with steel plate products to suit.



## Inhouse Capabilities

Saw cutting

Drilling

Mitre cutting

Marking

Stamping

CNC Programming

Oxy

Plasma

Stitch and slot

Haunching

Coping

Notching

Pack/Stack cutting

Cambering

## Industries Supplied

Automotive

Building Construction

Defence

Wind and Solar

Infrastructure

Mining

Maritime

Transport



# Genis Steel

[www.genissteel.com.au](http://www.genissteel.com.au)

Tohme Hayek

[info@genissteel.com.au](mailto:info@genissteel.com.au)

03 9465 1287

45 – 65 Oherns Road

Somerton, VIC 3062

## About

Focusing on industrial, commercial, and residential developments, our clients have peace of mind knowing a dedicated Project Manager is appointed to their project who will be their key point of contact for all aspects of the fabrication, delivery, and installation processes. Combined with an impressive fleet of access equipment, booms and scissor lifts, our rigging crews are well-equipped to manage any installation. Our highly qualified and ticketed riggers can fit and accurately erect steel from the most straightforward set of stair stringers to large multi-level apartments and portal-framed structures.

With extensive in-house capabilities, and well-employed processing, fabrication, and production facilities, we can provide the full extent of steel construction components to domestic dwellings, architecturally designed projects, and multi-level apartments right through to industrial, commercial and government projects.



## Capacity

12,000 tonnes per annum

## Inhouse Capabilities

Assemblies and Installations

Forming / Cutting / Bending

Painting

Shot and Media Blasting

Transport and Delivery

Welding

Supply and Distribution

Other: CNC Processing, Plateline, Plasma, Laser Cutting, Beamlines, Anglelines, Croppers, OH Cranes

## Industries Supplied

Industrial, Commercial, Residential, Modular and Government Projects

## Certifications

Victorian Branch ISO9001

Victorian Branch ISO45001

Victorian Branch ASI EMS





# GVP Fabricators

<https://gvpfabricators.com.au>

Stan Papayiannneris

stan@gvpfabricators.com.au

0438 844 583

25-29 Japaddy Street

Mordialloc, VIC 3195



## About

FABRICATION Welding Equipment MMAW, SAW, MIG (FCAW/GMAW)  
Fabrication Methodology Fabrication Aids Trial Assembly Survey  
Welding Procedures (i.e. AS1554 Part 1, 2, 3 & 5) Qualified Welder(s)  
NDT Inspections (NATA) QA/QC Inspection Test Plans & Supporting  
Records Quality Assurance Manufacturers Data Report (MDR's)

ERECTION Experienced Project Managers Erection Planning  
(Methodology) Temporary Works Engineering Heavy Lift Specialist  
Contract Administration Programming coordination with trades &  
delivery of material Safety & Environmental Working hand in hand  
with our dedicated site crews to ensure the safe and timely  
completion of the project Working closely with our client in  
achieving a better overall project outcome Craneage Fleet for site  
wet and dry hire: Liebherr 250 Tonne & 120 Tonne, Demag 40  
Tonne, Kato 20 Tonne. Maeda 4 Tonne

TRANSPORTATION Light Trucks Prime Movers Trailers (extendible  
exceeding 27m in length) Route Surveys Oversize Permits Approvals  
Vic Roads Escorts Steerable Jinker 50 meters Specialized transport  
for over-dimensional deliveries

HANDLING Over Head Cranes Heavy Bay – lifting capacity of 20  
tonnes Forklifts

## Capacity

Capacity to deliver projects  
ranging from \$5 million to \$30  
million.

## Inhouse Capabilities

Assemblies and Installations

Forming / Cutting / Bending

Painting

Section Rolling

Transport and Delivery

Welding

## Industries Supplied

Building Construction

Defence

Infrastructure

Health & Education

## Certifications

Construction Category (CC2)  
Certified in compliance with  
AS/NZS 5131 ( 2016) Certificate  
SCA-082 CC2

Environmental Sustainability  
Charter

Audit Certificate ESC Band:  
GOLD



## Infrabuild

[www.infrabuild.com](http://www.infrabuild.com)

Nick Fithall

[nick.fithall@infrabuild.com](mailto:nick.fithall@infrabuild.com)

02 8424 9800

105-123 Dohertys Road

Laverton, VIC 3026

### About

Laverton Steel Mill comprises an Electric Arc Furnace manufacturing steel from entirely recycled steel (ferrous scrap) a Rod rolling mill and a Bar Rolling Mill. Steel sections produced on site include Reinforcing Bar, Wire Rod and Merchant Bar. More broadly, InfraBuild recycles, manufactures, and distributes steel long products. We are Australia's only fully vertically-integrated steel manufacturer spanning scrap metal recycling, steel manufacturing and downstream distribution. We are Australia's largest processor and distributor of steel long products, including reinforcing bar, reinforcing mesh, tubular and hollow sections, merchant bar and wire products. Our commitment to the environment includes optimising the sustainability of our products through the product life cycle. We are committed to the promotion of the recovery, re-use and recycling of steel and other products. This is demonstrated in our manufacturing process, where we operate electric arc furnaces to rebirth scrap steel and then use our rolling mills to make new steel products. We operate in more than 150 locations across Australia. InfraBuild has a rich history, supplying some of Australia's largest infrastructure projects for more than 100 years. Through our mission to Build future through sustainable steel, we continue to play an integral role in the nation building of Australia.

### Capacity

750,000 tonnes per annum ex Laverton Steel Mill

### Inhouse Capabilities

Forming / Cutting / Bending

Milling

Section Rolling

Transport and Delivery

Supply and Distribution

Reinforcing Scheduling & 3D Modelling

### Industries Supplied

Aerospace/Aviation

Automotive

Building Construction

Defence

Energy – Hydrogen

Energy – Hydroelectricity

Energy – Battery Infrastructure

Wind and Solar

Infrastructure

Mining

Maritime

Refinery

Transport

Agriculture



# Keppel Prince Engineering

<https://keppelprince.com.au>

Dan McKinna

[dan.mckinna@keppelprince.com.au](mailto:dan.mckinna@keppelprince.com.au)

0408 527 822

184 Darts Road

Portland, VIC 3305

## About

Keppel Prince Engineering specialises in the construction, fabrication and maintenance of industrial structures and equipment. From wind farms to bridges, our team of 300 professionals has the experience and resources to deliver your important project on brief, on time and on budget. The world has changed. We offer new solutions to build and maintain a sustainable future for our customers, the environment and the community. Our dedication to meeting customer needs and expectations has been recognised by third party certification of our quality system to ISO 9001. Our processes are uniquely set up to ensure continual improvement in the way we develop, manufacture and deliver our products and services. Our customers are integral to these processes. The foundation of our success is our exceptional people, production capability, inspection and testing facilities and a can-do approach which all ensure a total solution to our customer needs and expectations. Occupational health and safety is both an individual and shared responsibility for all employees and the organisation. Our teams actively work together to maintain a work environment that is safe, healthy and productive. Our rigorous policies and commitment have been recognised by the Victorian Workcover Authority with two separate awards for innovation and excellence in workplace health and safety.



## Capacity

30,000 tonne per annum

Capacity to deliver projects of up to \$50 million

## Inhouse Capabilities

Assemblies and Installations

Forming / Cutting / Bending

Machining

Milling

Mobile Cranes

NDT

Painting

Plate Rolling

Shot and Media Blasting

Welding

## Industries Supplied

Building Construction

Wind and Solar

Infrastructure

Mining

Maritime

Manufacturing

## Certifications





# Major Furnace Australia

[www.majoreng.com.au](http://www.majoreng.com.au)

Geoff Peacock

[geoff.peacock@majoreng.com.au](mailto:geoff.peacock@majoreng.com.au)

03 8558 1833

92 Fairbank Road

Clayton South, VIC 3169

## About

Operating since 1912 and recent Victorian Medium Manufacturer of the Year, Major supplies thermal, air pollution and filtration technology to heavy industrial, mining, grain, timber and utilities sectors both in Australia and Internationally.

Major also supplies a wide range of build to print services utilising its large, heavy engineering workshop with heavy plate rolling, high definition plasma and oxy cutting, machining to 7m in diameter and fabrication and assembly.

Major provides a 'one stop shop' for customers by maintaining the resources necessary to complete contracts from concept through to routine maintenance, component sales and after sales support.



## Capacity

\$15 million to \$25 million

## Inhouse Capabilities

Assemblies and Installations

Forming / Cutting / Bending

Milling

Painting

Plate Rolling

Section Rolling

Welding

## Industries Supplied

Aerospace/Aviation

Automotive

Defence

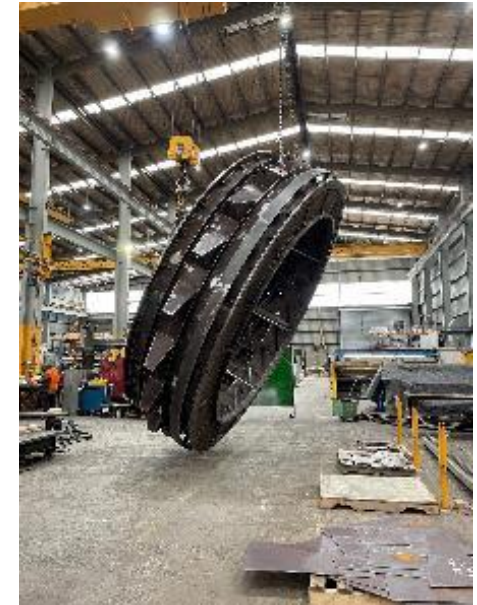
Energy-Hydrogen

Infrastructure

Mining

## Certifications

Type B Plumbers and Gasfitters



## New Touch Industries

[www.newtouchind.com.au](http://www.newtouchind.com.au)

George Mazzarella

[george@ntiv2.com.au](mailto:george@ntiv2.com.au)

0433 064 000

Corner of Malvern Street and Edelmaier Street

Bayswater, VIC 3153

### About

New Touch Industries is a company renowned for providing high quality laser cutting & marking services at competitive prices. We offer an expanded range of services to meet your Laser Cutting & Fabrication needs.



### Capacity

Small prototypes to production runs

### Inhouse Capabilities

Assemblies and Installations

Forming / Cutting / Bending

Transport and Delivery

Welding

### Industries Supplied

Aerospace/Aviation

Automotive

Building Construction

Defence

Wind and Solar

Infrastructure

Mining

Transport

### Certifications

ISO9002





## Orrcon Steel

<https://orrcon.com.au/>

Christopher Thornton

info@orrconsteel.com.au

03 9253 9686

Gate 1, 16-24 Westall Road

Westall, VIC 3169



### About

Orrcon Steel is a renowned manufacturer and Australian distributor and of steel, tube, and pipe. As part of BlueScope, Orrcon Steel is cognisant of the fact that our success stems from a flexible response to market opportunities and that our long-term success depends on our capacity to satisfy our customers' expectations. Our Orrcon Melbourne site at Westall has a 2367.9 square meter warehouse with more than 40 warehouse personnel. The distribution facility includes 15 cranes and has a KASTO cassette storage system. Orrcon Steel has regional Victorian branches in Morwell, Bendigo, and Geelong. It also has tubular distribution facilities and branches in all Australian States.

Orrcon Steel provides high-quality steel products and solutions. Our product line includes locally manufactured structured tubular steel such as RHS, SHS, CHS and Firepipe. We also manufacture and distribute a range of precision steel tubular products. At Orrcon Steel we recognise the importance of product and service quality as well as delivery efficiency. Our customers include steel fabricators, furniture and trailer body manufacturers, housing and construction companies, pipeline and infrastructure engineering firms, and others. We have a countrywide branch, stockist, and reseller network.

### Capacity

We supply a wide range of steel products for a variety of infrastructure projects, some in excess of \$50 million in value. With over 7000 customers in our portfolio and distribution business in every State of Australia supported by our own tubular steel mill, backed by our parent BlueScope, we have confidence in delivery for any project of magnitude.

### Industries Supplied

Automotive

Building Construction

Defence

Energy – Hydrogen

Energy – Hydroelectricity

Energy – Battery Infrastructure

Wind and Solar

Infrastructure

Mining

Maritime

Transport

Solar and Wind Renewables

### Inhouse Capabilities

Transport and Delivery

Supply and Distribution

Pipe and Tube Manufacturing

Structural and Precision

Cut to length and third-party processing of long steel products

### Certifications

Quality Management System - ISO 9001

NATA accredited test facilities - ISO/IEC 17025

ACRS – Certified product and process conformance to AS/NZS 1163

Fire Sprinkler pipe CSIRO ActivFire® approved to comply with FAS 119/120 and AS4118.21



# PacifiCO Structural Steel

[www.pacificosteel.com.au](http://www.pacificosteel.com.au)

Ovi Constantin

oviconstantin@pacificosteel.com.au

0408 100 646

13 Endeavour Court

Dandenong South, VIC 3175



## About

PacifiCO Structural Steel is an industry leading structural steel fabrication company. Through a state-of-the-art computer-controlled processing plant and in-house engineering services, PacifiCO can streamline projects, provide superior quality, whilst maintaining a competitive edge when it comes to price.

PacifiCO's extensive experience and proven success can be seen in industries ranging from large distribution centres and manufacturing facilities to shopping centres, offices, car parks, refineries and more. Our steel fabrication capabilities lead the industry and provide quality our clients can trust.

PacifiCO's fabrication facility utilises the latest advancements in technology and innovative methods to provide superior product quality. Our commitment to the latest technology extends to our automated fabrication systems. The heart of PacifiCO's production line features Peddinghaus machines, including the XDM-630, a true multi-spindle drill and sawing machine. The technologies of carbide drilling, mitre-sawing, 4-axis scribing, tapping, countersinking and milling (slot and cope) are all employed on this productive, yet space-saving machine. In addition, our automation processes include a state-of-the-art sandblaster fully integrated with the XDM material handling system. PacifiCO installed in early 2023 the first fully automated robotic welding system to be operated in Victoria in the structural steel industry.

## Capacity

Capacity to deliver projects ranging in value from \$0-\$20 million

## Inhouse Capabilities

Assemblies and Installations

Forming / Cutting / Bending

Heat Treating and Tempering

Milling

Painting

Shot and Media Blasting

Transport and Delivery

Welding

Robotic Welding

## Industries Supplied

Building Construction

Infrastructure

## Certifications

ASI Environmental Sustainability Charter  
Certification – Gold Level



# Page Steel Fabrications

[www.pagesteel.com.au](http://www.pagesteel.com.au)

Chris Piacentini

[chris@pagesteel.com.au](mailto:chris@pagesteel.com.au)

03 9931 1600

20 Fulton Drive

Derrimut, VIC 3026

## About

Page Steel Fabrications was established in 1970 as a fabricator and metalworker. Page Steel have recently installed a structural steel robotic fabrication system. Together with an array of CNC machines and latest barcoding software technologies they are well equipped to



## Capacity

100 tonnes – 10,000 tonnes

\$500,000 - \$70 million

## Inhouse Capabilities

Assemblies and Installations

Forming / Cutting / Bending

Painting

Shot and Media Blasting

Transport and Delivery

Welding

## Industries Supplied

Building Construction

Defence

Infrastructure

Mining

Transport

## Certifications

ESI



## R & M Engineering

[www.rmeng.com.au](http://www.rmeng.com.au)

Matthew Foat

[matt@rmeng.com.au](mailto:matt@rmeng.com.au)

03 5143 1006

379 Raglan Street

Sale, VIC 3850

### About

Capabilities include structural steel supply, coatings fabrication and installation. In addition to mechanical & food processing equipment installation.

### Capacity

East Sale RAAF – 500 tonnes / \$4.5 million

Westside Place Stage 2 – 275 tonnes / \$5.1 million

Dynon Train Maintenance – 290 tonnes / \$6.5 million

Drouin Waste Water Treatment Plant – 150 tonnes / \$1.8 million



[www.rmeng.com.au](http://www.rmeng.com.au)

### Inhouse Capabilities

Assemblies and Installations

Forming / Cutting / Bending

Galvanizing

Milling

Painting

Plate Rolling

Section Rolling

Shot and Media Blasting

Transport and Delivery

Welding

Supply and Distribution

Drafting

### Industries Supplied

Building Construction

Defence

Energy – Hydrogen

Energy – Hydroelectricity

Energy – Battery Infrastructure

Wind and Solar

Infrastructure

Mining

Maritime

Refinery

Transport





# Shearform

[www.shearform.com.au](http://www.shearform.com.au)

Sean Rumler

[srumler@shearform.com.au](mailto:srumler@shearform.com.au)

03 9706 5100

5 Kitchen Road

Dandenong South, VIC 3175



## About

Shearform has been a leader in the steel processing and Fabrication area for over 35 years. With ISO9001 accreditation we are able to supply our customer's with full trace-ability, manufacturers data reports and inspection and test plans. Our ten acre site has seen much in the way of investment over our 35 years. Our ten acre site with 22 overhead cranes housed in 9 buildings, the biggest brake press in the southern hemisphere, the largest twin bed laser cutter available, CNC brake press machines, rolling, bending and machining capabilities. Everything in Steel! Some of the areas we work in include: Construction bridges walkways, beams and gantries pressed, pile casings rolled, structural steel manufactured for commercial and industrial buildings and shelters. Architectural cladding laser cut, pressed and formed for installation. Defence multiple projects wear plate, fabrication, rolling and pressings. Trucking transport pressing of chassis rails, truck bodies, pipe bending and rolling for trailer features, laser cutting of parts required. Rail undercarriage fabrication, steel pressings, internal steel pressings for Tier 1 manufacturers. Gas and Oil laser cutting of parts, pressure vessel fabrication, piping, plate rolling and tank fabrication, transportable skids with machinery or vessels for remote installations. Gas tanker trailer manufacturer and repairs. Mining wear plate liners, machine parts laser cut and pressed, large beams fabricated, storage and transport accessories fabricated then tested and rated for remote site use.

## Inhouse Capabilities

Assemblies and Installations

Forming / Cutting / Bending

Milling

Painting

Plate Rolling

Section Rolling

Transport and Delivery

Welding

Supply and Distribution

## Industries Supplied

Automotive

Building Construction

Defence

Wind and Solar

Infrastructure

Mining

Maritime

Transport

## Certifications

Quality ISO 9001

## Capacity

Supply, cut, press, roll, bend or manufacture / fabrication we can do it all. With the largest brake press and plate roller in the southern hemisphere



# Skrobar Engineering

[www.skrobar.com.au](http://www.skrobar.com.au)

Eamon Matthews, Andrew Matthews

[estimating@skrobar.com.au](mailto:estimating@skrobar.com.au)

03 9792 0655

34 Elliot Road

Dandenong South, VIC 3175

## About

Established in 1969 Skrobar, based in Dandenong South, is a structural steel company with experience in commercial steel fabrication with capacity of up to 5000 tonne per year.

Skrobar Engineering is a member of the Structural Steel Fabricators Association Victoria (SSFV) and the Australian Steel Institute (ASI).

In addition to the inhouse capabilities listed, Skrobar Engineering can provide galvanising, section rolling, shot and media blasting and specialist paint systems through their associates.

**SKROBAR|TROJAN**  
STRUCTURAL STEEL COMPANY

## Capacity

5,000 tonnes per annum

## Inhouse Capabilities

Assemblies and Installations

Forming / Cutting / Bending

Painting

Transport and Delivery

Welding

## Industries Supplied

Building Construction

Infrastructure

## Certifications

Steel Compliance Australia



# Steelwork Bendigo

[www.steelworkbendigo.com](http://www.steelworkbendigo.com)

Jason Miller

[jason@steelworkbendigo.com](mailto:jason@steelworkbendigo.com)

0414 247 557

302 Station Street

Epsom, VIC 3551

## About

Fabricators and installers of structural steel, architectural metalwork, general engineering and site welding.



## Capacity

750 – 1,000 tonnes per annum

## Inhouse Capabilities

Assemblies and Installations

Forming / Cutting / Bending

Painting

Shot and Media Blasting

Transport and Delivery

Welding

## Industries Supplied

Building Construction

Defence

Infrastructure

Mining





# Stilcon Holdings

[www.stilcon.com.au](http://www.stilcon.com.au)

Tony Ballantyne

[reception@stilcon.com.au](mailto:reception@stilcon.com.au)

03 9999 4000

134-140 Fairbairn Road

Sunshine West, VIC 3020

## About

Stilcon has been operating as a Victorian family run business since the 1970s and is one of Victoria's leading structural steel specialists that continues to support large construction and engineering projects across Victoria.

Over the past 30 years, and with its state-of-the-art steel processing equipment and over 250 employees, Stilcon have completed a diverse range of projects and can pride themselves with the involvement in State & Federal infrastructure, rail projects, level crossing removals and other.



## Capacity

Capacity to deliver projects valued at \$5-50 million

## Inhouse Capabilities

Assemblies and Installations

Painting

Transport and Delivery

Welding

## Industries Supplied

Building Construction

Defence

Infrastructure

Mining

Transport

Health

Education

## Certifications

Steelwork Compliance Australia CC3

ISO 9001: 2015

ASI Environmental Sustainability Charter

Certification Green Star (Gold)





# Structural Challenge

[www.structuralchallenge.com.au](http://www.structuralchallenge.com.au)

Maria Mavrikos

[maria@structuralchallenge.com.au](mailto:maria@structuralchallenge.com.au)

0403 257 925

20-26 Produce Drive

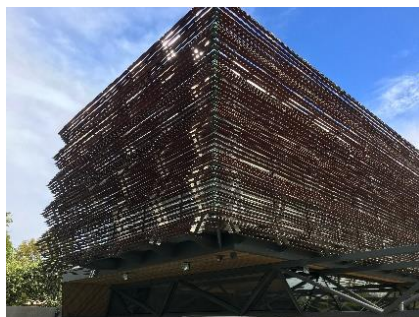
Dandenong South, VIC 3175



## About

Structural Challenge Pty Ltd is a structural steel fabricator based in Victoria which specialises in medium to large commercial and infrastructure projects.

With over 80 team members SC has the experience and capability to undertake complex steel projects with professionalism. Our Estimating Team offers value management and we welcome Early Sub-contractor engagement. Our Project Team is made up of Project Managers, Site Engineers and Administrators which focus on beating program. SC has an inhouse detailing team, Beam line and Plate processing.



## Capacity

Capacity of 5,000 tonnes / \$30 million

## Inhouse Capabilities

Assemblies and Installations

Forming / Cutting / Bending

Painting

Transport and Delivery

Welding

Supply and Distribution

## Industries Supplied

Automotive

Building Construction

Defence

Energy – Hydrogen

Wind and Solar

Infrastructure

## Certifications

Steelwork Compliance Australia CC3

ASI Environmental Sustainability  
Charter Gold Certification

WTIA Accreditation



# Sutcliffe Engineering

[www.sutcliffe.com.au](http://www.sutcliffe.com.au)

Rasim Zaljevic

[rasim@sutcliffe.com.au](mailto:rasim@sutcliffe.com.au)

03 8786 3188

21-23 Colrado Court

Hallam, VIC 3803

## About

We have extensive experience in welding exotic materials such as copper to steel, high nickel alloys – Inconel and Incolloy, low Ferrite Stainless Steel, Invar and Hastalloy to a wide variety of Australian and International standards. These cover normal structural fabrications to complex pressure vessels. Quality Records are maintained demonstrating conformance and traceability to its origin. Inspection and Test Plans are established and verify that all aspects of specification criteria are met Manufacturers Data Report 's are progressively compiled during the course of the work(s) and kept up to date as work progresses. At the completion of work(s) the required number of copies are submitted to the client.

We offer a complete package catering to customer requirements including:

- Shop drawing modeling/detailing
- Steel fabrication and processing
- Non-destructive testing (NATA)
- Protective coating treatments
- Onsite mechanical installation/erection, site fabrication, and pipe work

## Capacity

2500 tonne per annum

## Inhouse Capabilities

Welding

## Industries Supplied

Building Construction

Infrastructure

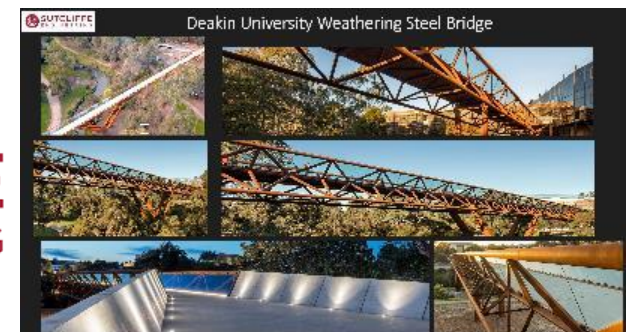
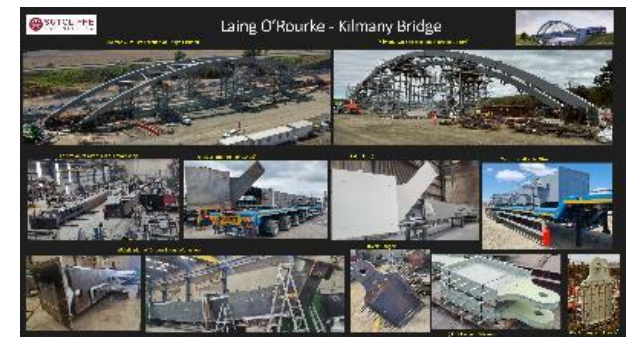
Mining

Refinery

## Certifications

Steelwork Compliance Australia CC3

ASI Environmental Sustainability  
Charter Gold Certification



# Vulcan

[www.vulcan.co](http://www.vulcan.co)

Samantha Stockwell

[samantha.stockwell@vulcan.co](mailto:samantha.stockwell@vulcan.co)

03 8792 9600

72– 86 Nathan Road

Dandenong South, VIC 3175



## About

Since our doors first opened in 1995, Vulcan Steel has been on a mission to shake up the steel and metal industry. Our goal? To be the go-to metals distributor for customers across Australia and New Zealand, offering the best service and top-notch products. Vulcan has broadened its product offerings to include a diverse range of steel and metal products, from carbon steel to stainless steel, and everything in between, such as plate processing, coil processing, engineering steels, and aluminium. Our unwavering commitment to reliable service has driven our growth both organically and through the acquisition of well-established businesses. With over 70 branches throughout Australia and New Zealand and 1400+ employees across six business divisions, we are a leading force in the industry. Our extensive product range is used in every aspect of the economy, from the tiniest components in high-tech applications to large infrastructure and building projects. Customer satisfaction is at the forefront of our priorities, and this is reflected in our consistently high Delivery in Full on Time (DIFOT) score in the high 90s. Our inventory levels are meticulously managed to ensure our customers always have access to the products they need. Our employees are empowered to make quick decisions in response to customer needs, and our transportation fleet, and quality products with traceability are just a few reasons why our customers trust us. At Vulcan Steel, empowering our employees to reach their full potential is at the core of our strategy. We believe in creating a workplace where everyone is an active decision-maker. Recognizing that good health is not just physical, we prioritize the mental health of our employees by providing onsite gym facilities and support for accessing mental health services if needed. Our employees feel secure, supported, and relaxed, yet remain highly professional and dedicated. This commitment to empowering people extends beyond the workplace as we are supporters of the Victorian School of the Arts in Melbourne and the Halberg Trust in New Zealand. In 2022, Vulcan Steel took its place on the Australian Stock Exchange (ASX) and the New Zealand Stock Exchange (NZX), with securities listed under ASX code: VSL and NZX code: VSL. We're committed to making continuous improvements to ensure our continued success. With a motivated workforce, the infrastructure we need, and a drive to stay at the forefront of the steel industry in Australia and New Zealand, we're confident that we'll keep delivering unbeatable service and an extensive, quality product offering for years to come.

## Capacity

Vulcan owns all the trucks delivering its product in full on time to customers with a fleet of over 150.

## Inhouse Capabilities

Forming / Cutting / Bending

Plate Rolling

Transport and Delivery

Supply and Distribution

## Industries Supplied

Aerospace/Aviation

Automotive

Building Construction

Defence

Energy – Hydrogen

Energy – Hydroelectricity

Energy – Battery Infrastructure

Wind and Solar

Infrastructure

Mining

Maritime

Refinery

Transport

# VULCAN.



# Webforge Locker

[www.webforge.com.au](http://www.webforge.com.au)

[info@webforge.com.au](mailto:info@webforge.com.au)

1800 635 947

2 Cojo Place

Dandenong, VIC 3175

## About

Webforge Locker is a leading provider of high-quality and innovative engineered products and services. Our specialized offerings include, Industrial flooring, Grating and Handrail solutions. Safety barrier systems that are widely used in the engineering and infrastructure market.

Carpark facades, Balustrades, and Screening solutions that are designed to enhance the aesthetic appeal of construction commercial projects. Our screening media solutions are designed to support the resource sector by providing effective solutions for separating and sorting materials. At Webforge Locker, we are committed to delivering exceptional value to our customers by providing tailored solutions

## Inhouse Capabilities

Manufacturing

## Industries Supplied

Building Construction

Infrastructure

Mining

Refinery



A **valmont**  COMPANY



## Victorian Government Office Locations

Metropolitan offices		
<b>Bundoora</b> Northern Metropolitan Region University Hill Suite, 16 Level 1, 20 Enterprise Drive, Bundoora VIC 3083 Phone: (+61 3) 9935 0600 Email: <a href="mailto:information.northmetro@ecodev.vic.gov.au">information.northmetro@ecodev.vic.gov.au</a>	<b>Dandenong</b> Southern Metropolitan Region Level 6, 165-169 Thomas Street Dandenong VIC 3175 Phone: (+61 3) 9938 0100 Email: <a href="mailto:information.southmetro@ecodev.vic.gov.au">information.southmetro@ecodev.vic.gov.au</a>	<b>Melbourne</b> 121 Exhibition Street Melbourne VIC 3000 Phone: (+61 3) 9651 9999
Regional offices		
<b>Ballarat</b> 300-304 Mair Street Ballarat VIC 3350 Phone: 1800 878 981 Email: <a href="mailto:information.ballarat@rdv.vic.gov.au">information.ballarat@rdv.vic.gov.au</a>	<b>Bendigo</b> Galkangu - Bendigo GovHub 195-229 Lyttleton Terrace Bendigo VIC 3550 Phone: 1800 950 146 Email: <a href="mailto:information.loddonmallee@rdv.vic.gov.au">information.loddonmallee@rdv.vic.gov.au</a>	<b>Geelong</b> Level 2, Harrison Place 237 Ryrie Street Geelong VIC 3220 Phone: 1800 950 145 Email: <a href="mailto:information.geelong@rdv.vic.gov.au">information.geelong@rdv.vic.gov.au</a>
<b>Gippsland</b> Latrobe Valley GovHub 65 Church Street Morwell VIC 3840 Phone: 1800 325 217 Email: <a href="mailto:information.gippsland@rdv.vic.gov.au">information.gippsland@rdv.vic.gov.au</a>	<b>Melbourne</b> Level 31, 121 Exhibition Street Melbourne VIC 3000 Phone: 13 22 15 Email: <a href="mailto:rdv@rdv.vic.gov.au">rdv@rdv.vic.gov.au</a>	<b>Mildura</b> Cnr. Koorlong Ave and 11th Street 308-390 Koorlong Ave Irymple 3498 Phone: 1800 950 146 Email: <a href="mailto:information.loddonmallee@rdv.vic.gov.au">information.loddonmallee@rdv.vic.gov.au</a>
<b>Portland</b> 13A Richmond Street Portland VIC 3305 Phone: 03 9623 1300 Email: <a href="mailto:information.portland@rdv.vic.gov.au">information.portland@rdv.vic.gov.au</a>	<b>Tatura</b> 255 Ferguson Road Tatura VIC 3616 Email: <a href="mailto:information.hume@rdv.vic.gov.au">information.hume@rdv.vic.gov.au</a>	<b>Wangaratta</b> Wangaratta Government Centre 1st Floor, 62 Ovens Street Wangaratta VIC 3677 Email: <a href="mailto:information.hume@rdv.vic.gov.au">information.hume@rdv.vic.gov.au</a>
<b>Warrnambool</b> 703-709 Raglan Parade (PO Box 105) Warrnambool VIC 3280 Phone: 1800 950 145 Email: <a href="mailto:information.warrnambool@rdv.vic.gov.au">information.warrnambool@rdv.vic.gov.au</a>	<b>Wodonga</b> 111-113 Hume Street Wodonga VIC 3690 Email: <a href="mailto:information.hume@rdv.vic.gov.au">information.hume@rdv.vic.gov.au</a>	